

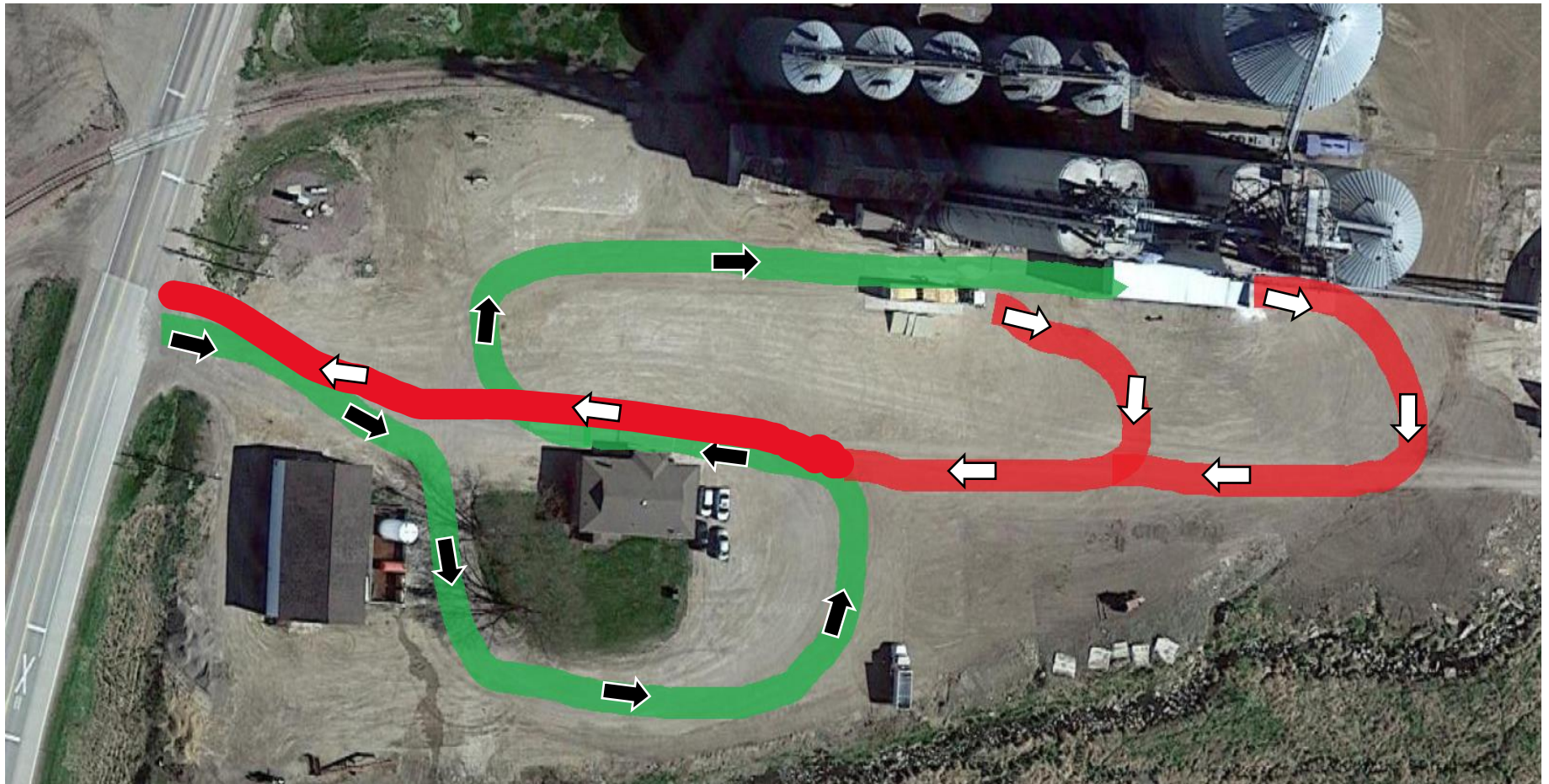


NEW CHS JASPER TRAFFIC PATTERN

***GREEN LINE/BLACK ARROWS:** Inbound (loaded) trucks pull off highway, loop around office, pull on scale facing west. Then make a U-Turn and pull into pits facing east

***RED LINE/WHITE ARROWS:** Outbound (empty) trucks pull off pits and turn to come onto scale facing west. Alternate with inbound in line.

We've also installed a kiosk system at the scale featuring a ticket printer and a card reader, please see the back of this page for more info.



- All trucks/tractors/pickups will NEED to pull on the scale facing west
- DO NOT pull onto the scale until the truck in front of you has completely pulled off the scale
- On your first load, grab a card from the card dispenser at the kiosk
 - One card for each truck/tractor/pickup
- Scan your card where it is marked on the kiosk, then watch the screen
 - The screen will display your name (with any splits) and the commodity. If the name/splits/commodity is incorrect, please use the button to call into the office.
 - Once we have a sample, the screen will tell you when and where to go (inside pit, outside pit, hill)
- PAY ATTENTION TO THE SCREEN. We will not be using the buzzer anymore.
- Once you have dumped, pull back onto the scale FACING WEST again, scan your card and your ticket will print.
- If you have a tractor that doesn't fit on the scale, pull the tractor off of the scale like usual and then walk back to the kiosk to scan your card.
- This will be a learning process for everyone, please stop in or call if you have any questions.